

GUMMY CANDIES (4/5) - Cocktail flavours -



EXPRESSIONS AROMATIQUES

yours flavourly

www.expressions-aromatiques.com

GUMMY CANDIES

- Cocktail flavours -


INGREDIENTS & SUPPLIERS

Spray dried glucose glucodry 385
Gelatine 250 bloom
Pan oil gum gloss AB 7713

Univer / Au Pérou
Arlès Agroalimentaire
Stéarinerie Dubois

APPLICATION RECIPE

Mix 1:			
880940	Gelatine 250 bloom		70.00 g
	Water		130.00 g
Mix 2:			
331251	Sugar		320.00 g
882478	Spray dried glucose		285.00g
	Water		195.00 g
	Flavour(s)		QS
330288	Citric acid MH		QS
	Colouring agent(s)		QS
	Pan oil gum gloss		QS



OPERATIVE INSTRUCTIONS

- 1) In a beaker. heat the water from mix 1 to 70°C. Gradually pour the gelatine. Stir until complete dissolution of the gelatine; maintain the beaker at 70°C. over a bain-marie while stirring.
- 2) Combine sugar. glucose and water from mix 2 in a pan. Heat up to 110°C. until complete sugar dissolution.
- 3) Pour mix 1 into mix 2 and stir well.
- 4) Add flavour. citric acid and colouring agent(s). Stir well and keep the mixture over a bain-marie for about 20 minutes before moulding.
- 5) Let the candies dry for 24 hours. then coat them with the anti-sticking agent (gloss AB 7713). It will prevent them from sticking and enhance their gloss.

GUMMY CANDIES

- Cocktail flavours -

Cocktail flavours



1/ CHAMPAGNE RASPBERRY

LA 05937/3 – Sparkling wine flavour

Recommended dosage → 2 g/kg

+

LA 10600 – Raspberry flavour

Recommended dosage → 1 g/kg



330288	Citric acid	→ 12 g/kg
660465	Elderberry juice	→ 0.8 g/kg

2/ MOJITO

330288	Citric acid	→ 15 g/kg
551364	Annatto E160b	→ 0.1 g/kg
552115	β-Carotene E160a (10%)	→ 0.2 g/kg
550937	chlorophyll E141 (10%)	→ 0.4 g/kg

LA 14049/3 – Cocktail flavour 17.7%Vol.

Recommended dosage → 3 g/kg

3/ PIÑA COLADA

330288	Citric acid	→ 12 g/kg
--------	-------------	-----------

LA 07106/5 – Cocktail flavour 38.9%Vol.

Recommended dosage → 3 g/kg



EXPRESSIONS AROMATIQUES

your flavourly

GUMMY CANDIES

- Cocktail flavours -

Cocktail flavours



4/ CAÏPIRINHA

330288	Citric acid	→ 12 g/kg
551364	Annatto E160b	→ 0.1 g/kg
552115	β-Carotene E160a (10%)	→ 0.2 g/kg
550937	chlorophyll E141 (10%)	→ 0.4 g/kg

LA 19565 – Cocktail flavour 87.2%Vol.
Recommended dosage → 2 g/kg

5/ SINGAPORE SLING

330288	Citric acid	→ 12 g/kg
550822	Cochineal red (10%)	→ 0.4 g/kg
550150	Caramel E150b	→ 0.4 g/kg

LA 19558 – Cocktail flavour 84.5%Vol.
Recommended dosage → 2 g/kg



6/ MARGARITA

330288	Citric acid	→ 12 g/kg
550764	Turmeric E100 (1%)	→ 0.6 g/kg

LA 10589 – Cocktail flavour 78%Vol.
Recommended dosage → 3 g/kg



EXPRESSIONS AROMATIQUES

your flavourly

GUMMY CANDIES

- Cocktail flavours -

Cocktail flavours



7/ VODKA ORANGE

330288	Citric acid	→ 12 g/kg
552115	β-Carotene E160a (10%)	→ 0.25 g/kg

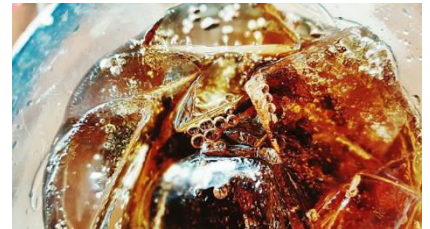
LA 13578 – Vodka Orange flavour 91.7%Vol.
Recommended dosage → 2.5 g/kg



8/ CUBA LIBRE

330288	Citric acid	→ 12 g/kg
550150	Caramel E150b	→ 4 g/kg

LA 19018/1 – Rum flavour
Recommended dosage → 1.5 g/kg
+
LA 05750/10 – Cola flavour 50.9%Vol.
Recommended dosage → 0.5 g/kg



9/ WHISKY COLA

330288	Citric acid	→ 12 g/kg
550150	Caramel E150b	→ 4 g/kg

LA 05688/8 – Whisky flavour
Recommended dosage → 1.5 g/kg
+
LA 05750/10 – Cola flavour 50.9%Vol.
Recommended dosage → 0.6 g/kg



EXPRESSIONS AROMATIQUES

your flavourly

GUMMY CANDIES

- Cocktail flavours -

Cocktail flavours



10/ MUSCAT WINE

LA 02806/1 – Wine flavour
Recommended dosage → 1.7 g/kg

330288 Citric acid → 12 g/kg



11/ SANGRIA

LA 17412 – Sangria flavour 88.3%Vol.
Recommended dosage → 2 g/kg

or

LN 18870 – Sangria flavour or natural flavour
Recommended dosage → 2 g/kg

330288 Citric acid → 12 g/kg
550822 Cochineal red (10%) → 0.5 g/kg
550150 Caramel E150b → 0.3 g/kg



EXPRESSIONS AROMATIQUES

your flavourly

GUMMY CANDIES

- Cocktail flavours -

Cocktail flavours



12/ WHISKY IRISH CREAM

LA 18577 – Whisky Irish cream flavour
Recommended dosage → 1.5 g/kg

330288	Citric acid	→ 8 g/kg
550150	Caramel E150b	→ 1.5 g/kg

13/ IRISH CREAM

LA 12696/1 – Irish cream flavour
Recommended dosage → 2 g/kg

330288	Citric acid	→ 8 g/kg
550150	Caramel E150b	→ 1.5 g/kg



14/ GIN TONIC

LA 06120 – Gin flavour 84.7%Vol.
Recommended dosage → 1.5 g/kg
+

LA 06138/2 – Tonic flavour 76%Vol.
Recommended dosage → 1.5 g/kg

330288	Citric acid	→ 12 g/kg
--------	-------------	-----------



EXPRESSIONS AROMATIQUES

your flavourly